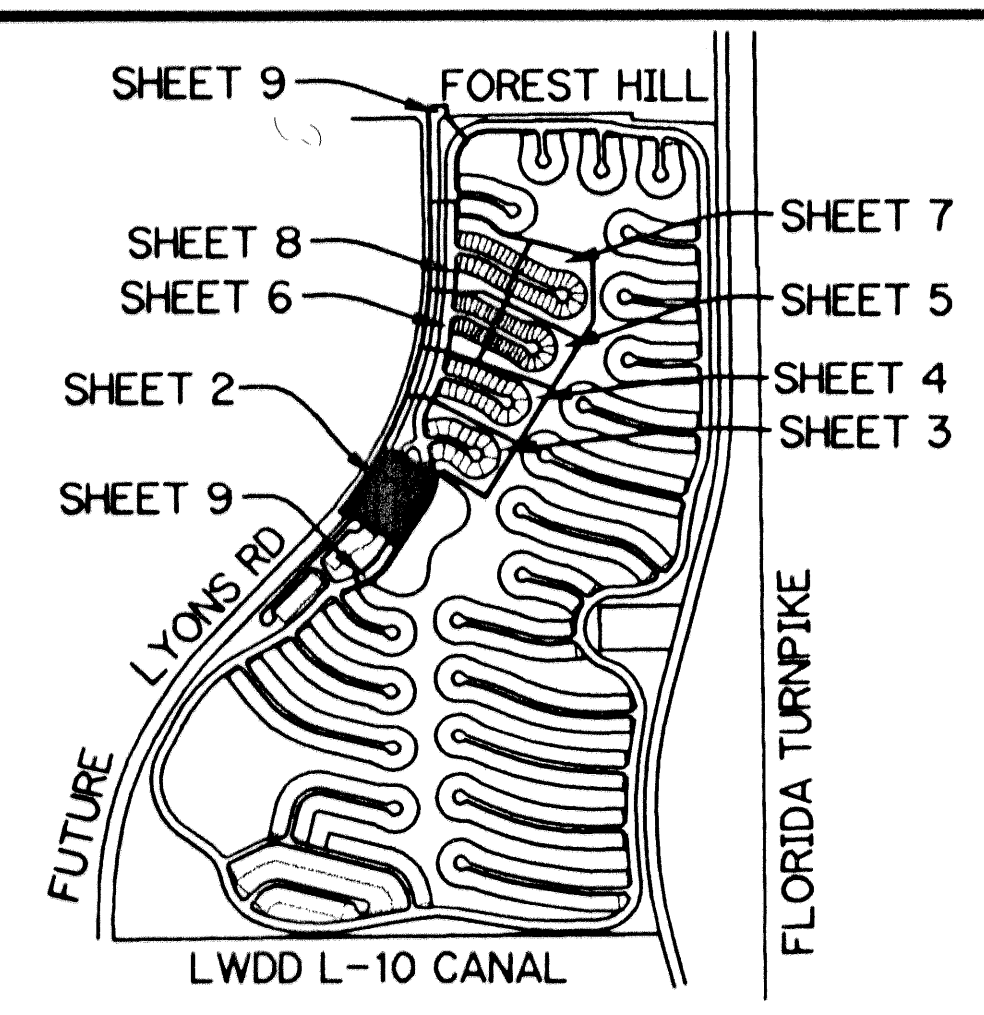


# VILLAGEWALK OF WELLINGTON - PLAT ONE

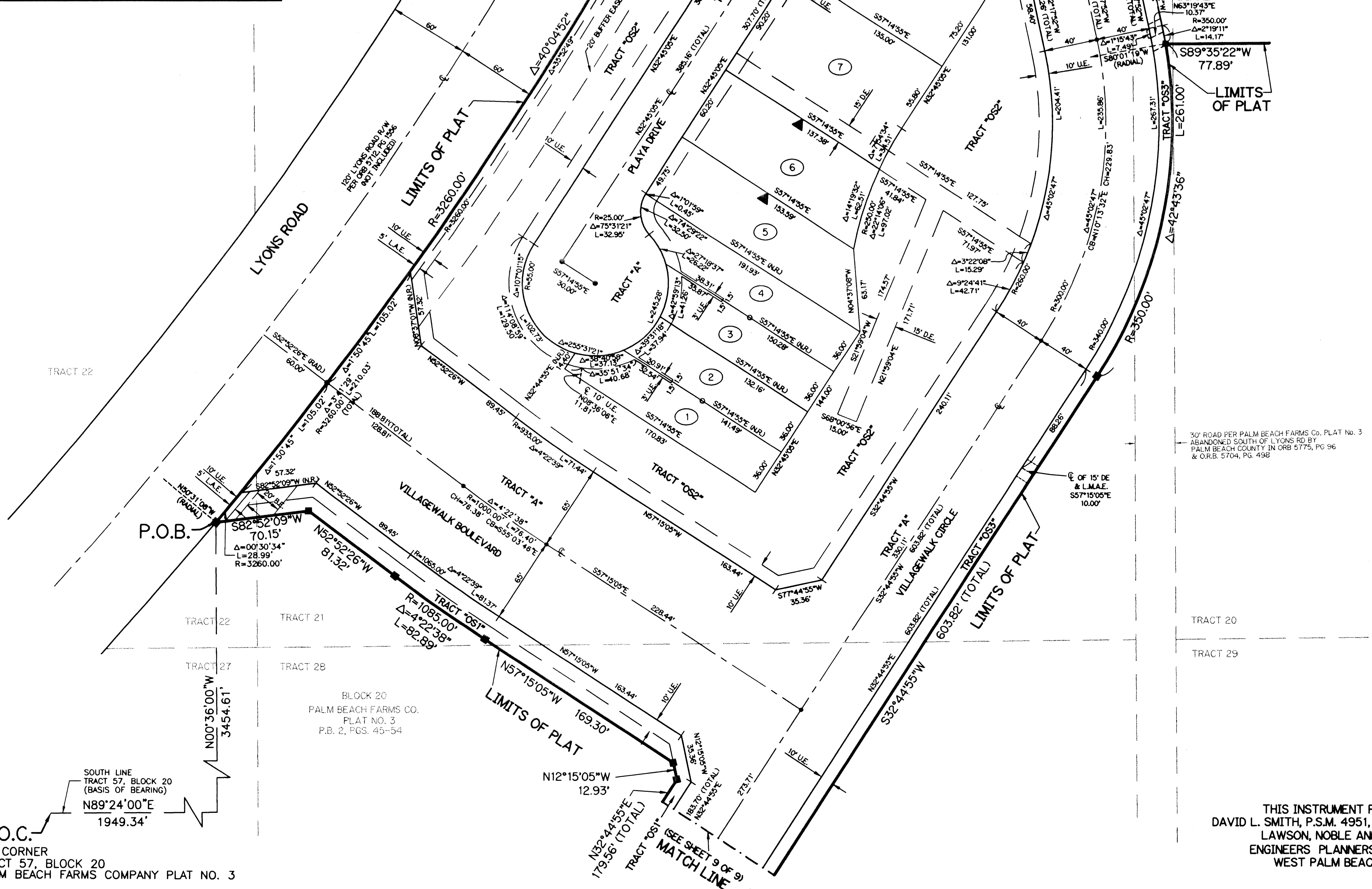
BEING A REPLAT OF A PORTION OF TRACTS 52, 61, 62, BLOCK 16 AND TRACTS 3, 4, 5, 12, 13, 14, 20, 21, 22, 28, BLOCK 20 ACCORDING TO THE PLAT OF PALM BEACH FARMS COMPANY PLAT NO. 3 AS RECORDED IN PLAT BOOK 2, PAGES 45 THROUGH 54, INCLUSIVE, OF THE PUBLIC RECORDS OF PALM BEACH COUNTY, FLORIDA. LYING IN SECTIONS 8 AND 17, TOWNSHIP 44 SOUTH, RANGE 42 EAST. VILLAGE OF WELLINGTON, PALM BEACH COUNTY, FLORIDA

SHEET 2 OF 9 JANUARY, 2002



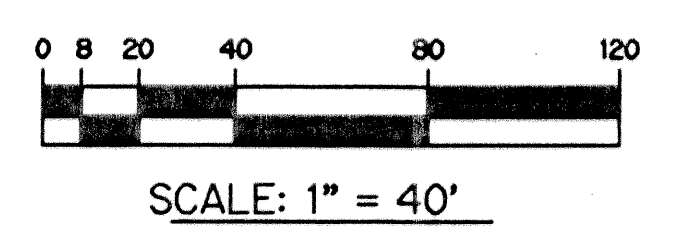
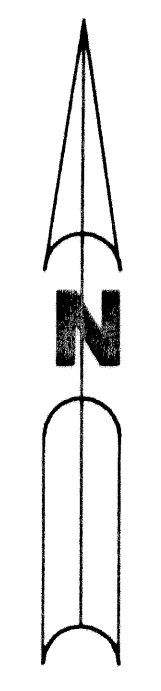
LOCATION & KEY MAP  
SEC. 8 & 17 TWP. 44 S RGE. 42 E

BLOCK 20  
PALM BEACH FARMS CO.  
PLAT NO. 3  
P.B. 2, PGS. 45-54



- LEGEND:**
- - PERMANENT REFERENCE MONUMENT, LB #6674
  - - PERMANENT CONTROL POINT, LB #6674
  - △ - DELTA ANGLE
  - ⊕ - CENTERLINE
  - D.B. - DEED BOOK
  - D.E. - DRAINAGE EASEMENT
  - L - ARC LENGTH
  - L.A.E. - LIMITED ACCESS EASEMENT
  - L.M.A.E. - LAKE MAINTENANCE ACCESS EASEMENT
  - L.M.E. - LAKE MAINTENANCE EASEMENT
  - L.W.D.D. - LAKE WORTH DRAINAGE DISTRICT
  - N.R. - NOT RADIAL
  - N.T.S. - NOT TO SCALE
  - P.R.M. - PERMANENT REFERENCE MONUMENT
  - O.R.B. - OFFICIAL RECORD BOOK
  - P.B. - PLAT BOOK
  - PGS. - PAGES
  - P.S.M. - PROFESSIONAL SURVEYOR AND MAPPER
  - R - RADIUS
  - R/W - RIGHT-OF-WAY
  - S.T. - SURVEY TIE
  - U.E. - UTILITY EASEMENT
  - VE. - VILLAGEWALK EASEMENT
  - BE. - BUFFER EASEMENT
  - P.O.C. - POINT OF COMMENCEMENT
  - P.O.B. - POINT OF BEGINNING
  - RAD - RADIAL
  - CH - CHORD LENGTH
  - CB - CHORD BEARING
  - ▲ - INDICATES ZERO SIDE FOR BUILDING
  - - INDICATES COMMON LOT LINE

30' ROAD PER PALM BEACH FARMS CO. PLAT NO. 3 ABANDONED SOUTH OF LYONS RD BY PALM BEACH COUNTY IN ORB 5775, PG 96 & O.R.B. 5704, PG. 498



THIS INSTRUMENT PREPARED BY  
DAVID L. SMITH, P.S.M. 4951, STATE OF FLORIDA  
LAWSON, NOBLE AND WEBB, INC.  
ENGINEERS PLANNERS SURVEYORS  
WEST PALM BEACH, FLORIDA